

INTEGRATED

PROCEDURES

- Best Practices- Design through Operations
- Align goals of stakeholders from beginning
- Buy-in for budget, best overall value
- Building Information/Energy Modeling
- Economies of coordination and scale
- Save installation/ongoing operations costs
- Pre-engineered/modular construction
- Consolidated, compatible building systems
- Continuous, actionable feedback

INTEGRATED

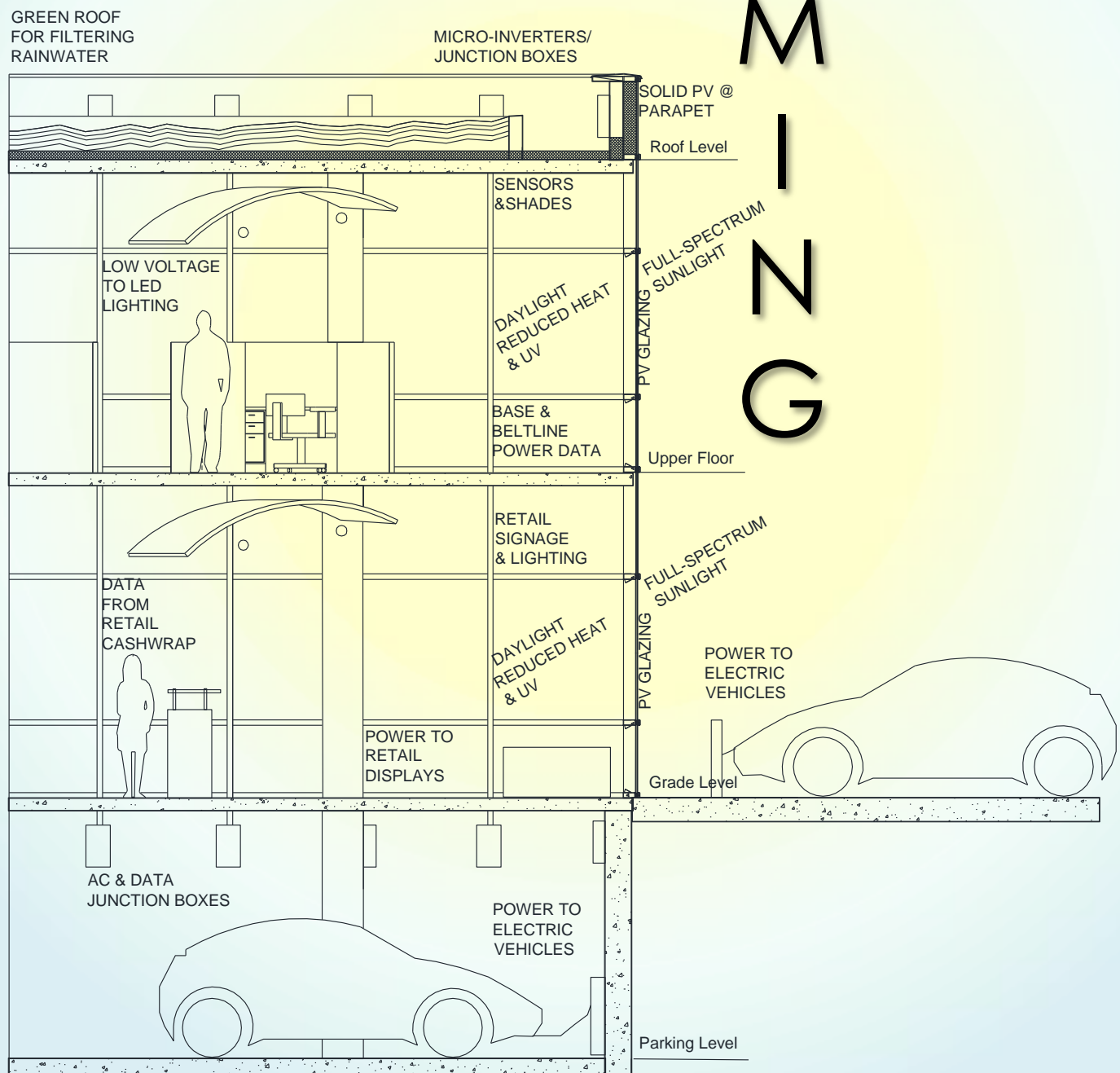
- Sensors and integral power allow control of envelope BEFORE HVAC response is required
- Embedded sensors collect real-time data
- Highly granular to each individual window
- Outlets at base/beltline/ceiling heights
- Integrated power and control of mechanical shading, dynamic glazing, lighting, plug load, security, secured wiring, remote operations

PATHWAYS

Power, data, sensors and controls for intelligent facades

I N T E G R A T E D

F R M I N G



INTELLIGENT GLAZING

- Powered wireway addresses major barrier to adoption of intelligent shading/glazing
- Ideal for PV, dynamic, or heated glazing
- Façade provides large, vertical surface
- PV reduces heat gain, creates usable power
- Direct current/low voltage to power LED lighting, electric vehicles, signage
- Generated during period of high demand
- Saves transmission/transformer/storage losses

INTEGRATED
= INTELLIGENT

- Ideal for gut rehabs- one package provides envelope/controls/power/data
- PV glazing and roof free for harvesting rainwater = true NZE/Water potential
- Smart envelope/smart building/smart grid
- Flexible for whatever is next.....

PATENTED WIREWAY

